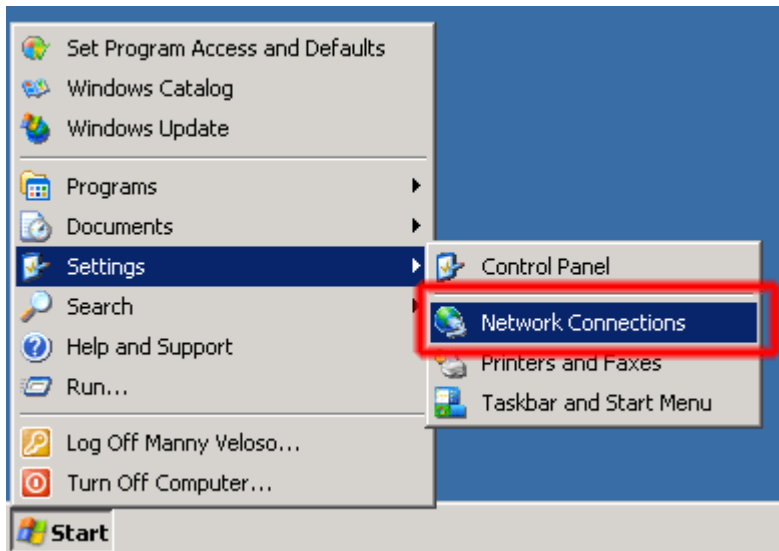


Setting up TVexpat under Windows XP

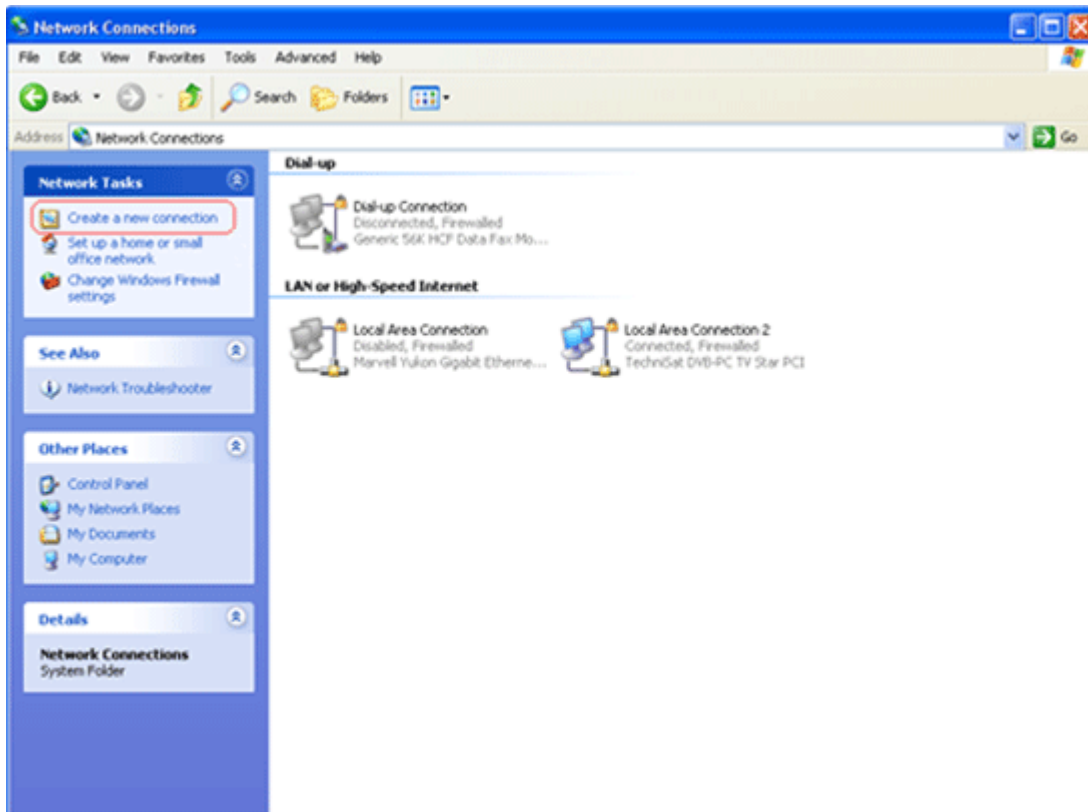
Setting up TVexpat.eu access under Windows XP is simple. The following instructions take you step by step through the manual set up process. The easiest way to set up is by installing the TVexpat dialler but in case you decide to set up the connection manually here are the instructions.

1. Open Network Connections

First, open the 'Network Connections' folder by going to the Start Menu and selecting Settings->Network Connections. It may also be located in Settings->Control Panel->Network Connections.



2. Click Create a new connection in the Network Tasks task pad

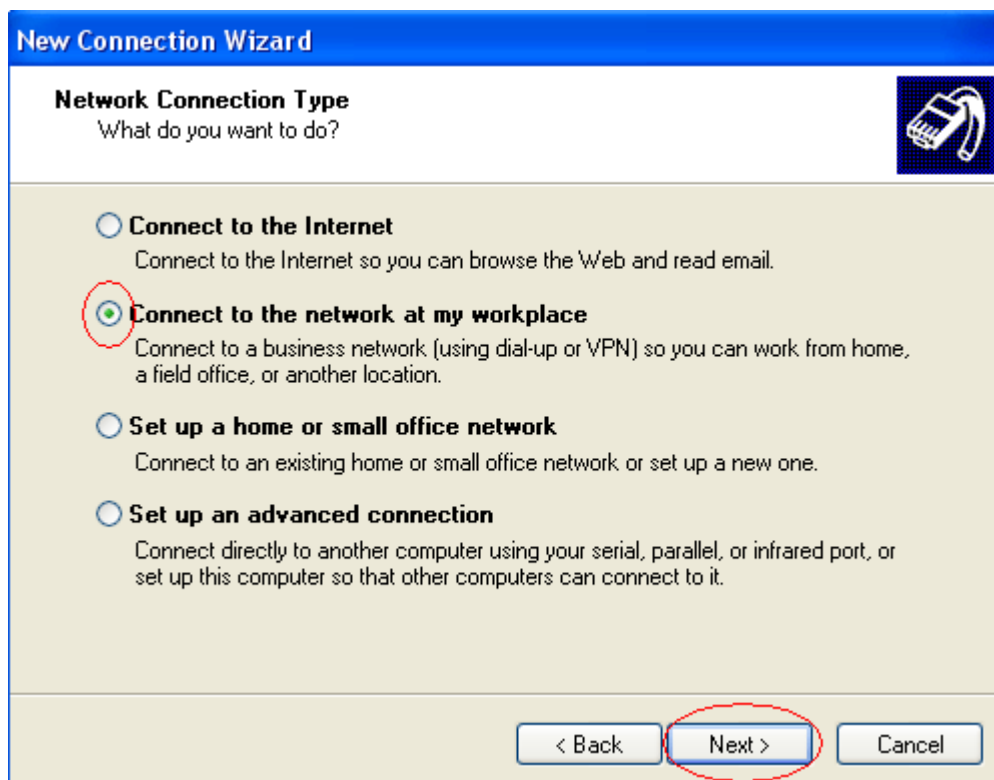


3. Click Next.

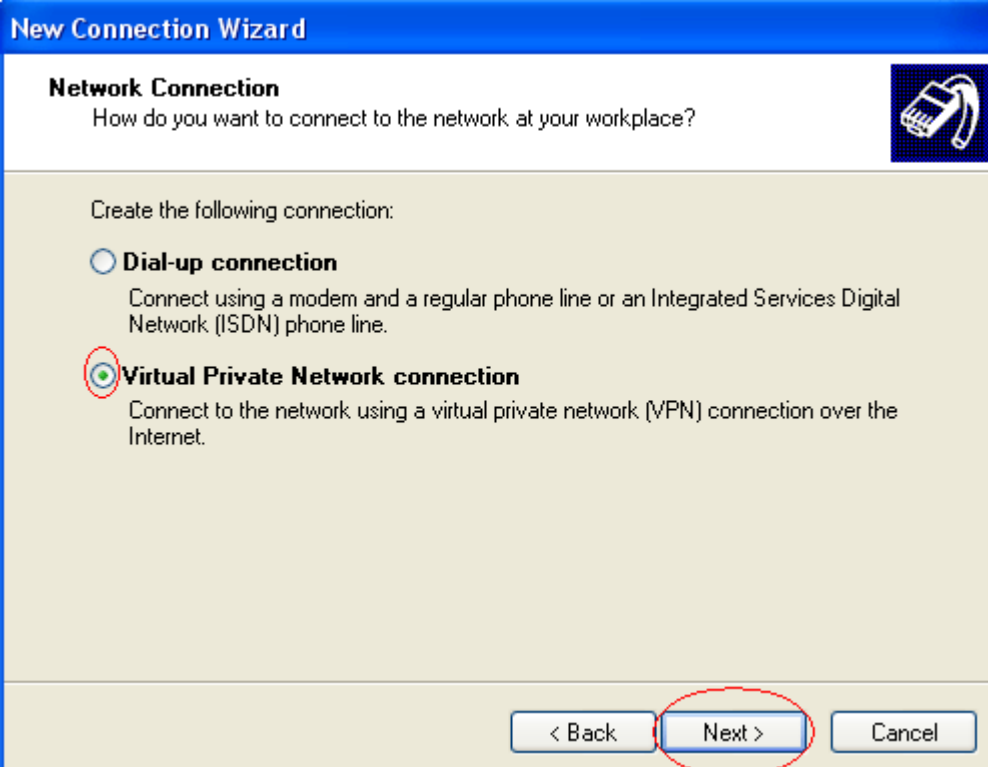


4. Select the connection type

Next, select 'Connect to the network at my workplace' and click the 'Next' button.



5. Click Virtual Private Network connection, and then click Next



New Connection Wizard

Network Connection
How do you want to connect to the network at your workplace?


Create the following connection:

- Dial-up connection**
Connect using a modem and a regular phone line or an Integrated Services Digital Network (ISDN) phone line.
- Virtual Private Network connection**
Connect to the network using a virtual private network (VPN) connection over the Internet.

< Back **Next >** Cancel

6. Enter the Company Name

On this screen, type 'TVexpat' for the Company Name and click the 'Next' button.



New Connection Wizard

Connection Name
Specify a name for this connection to your workplace.

Type a name for this connection in the following box.

Company Name

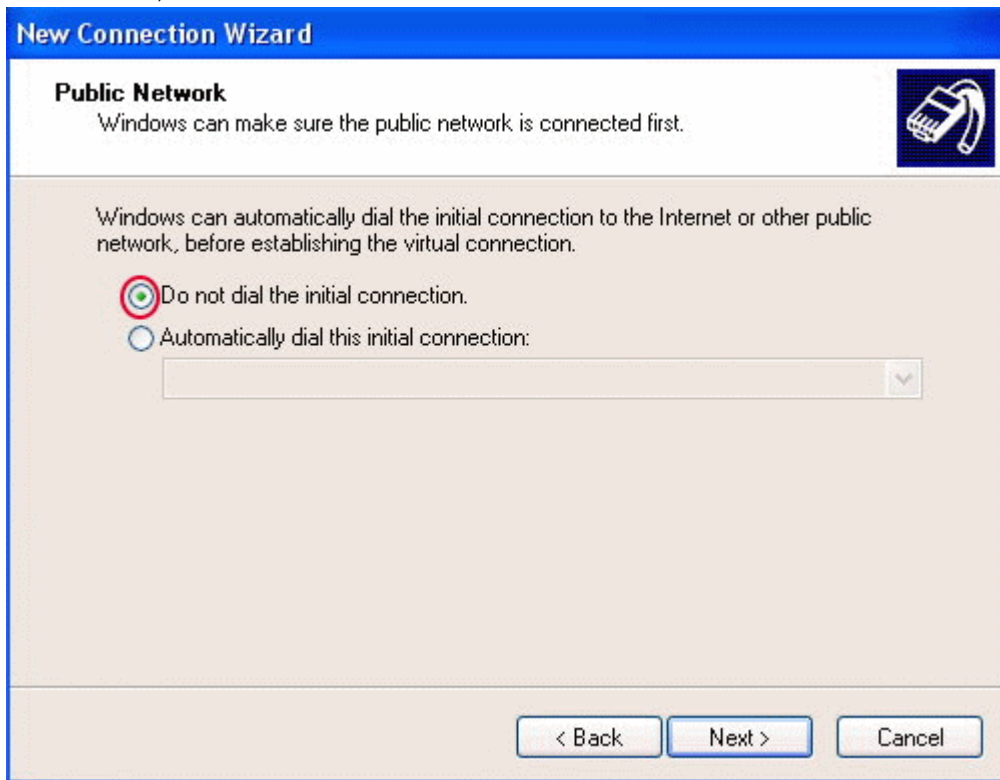
TVexpat

For example, you could type the name of your workplace or the name of a server you will connect to.

< Back **Next >** Cancel

7. Set auto-connect

On this screen, click "Do not dial the initial connection" and click the 'Next' button.



New Connection Wizard

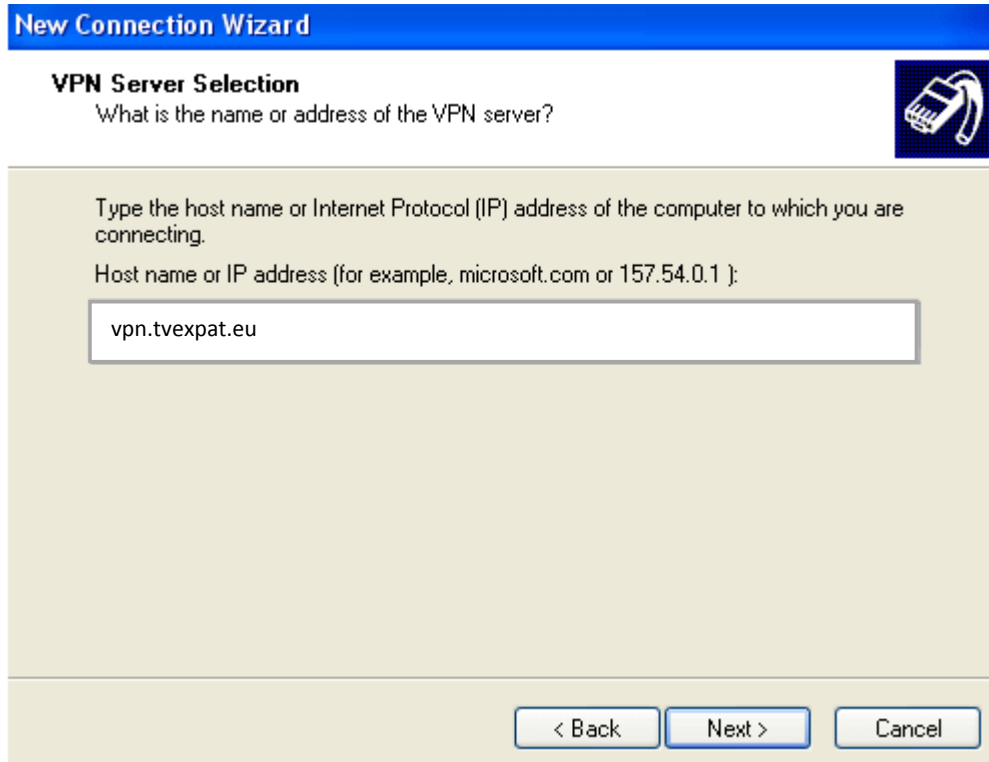
Public Network
Windows can make sure the public network is connected first.

Windows can automatically dial the initial connection to the Internet or other public network, before establishing the virtual connection.

Do not dial the initial connection.
 Automatically dial this initial connection:

< Back Next > Cancel

8. Type IP address of our VPN server " vpn.tvexpat.eu " Click Next



New Connection Wizard

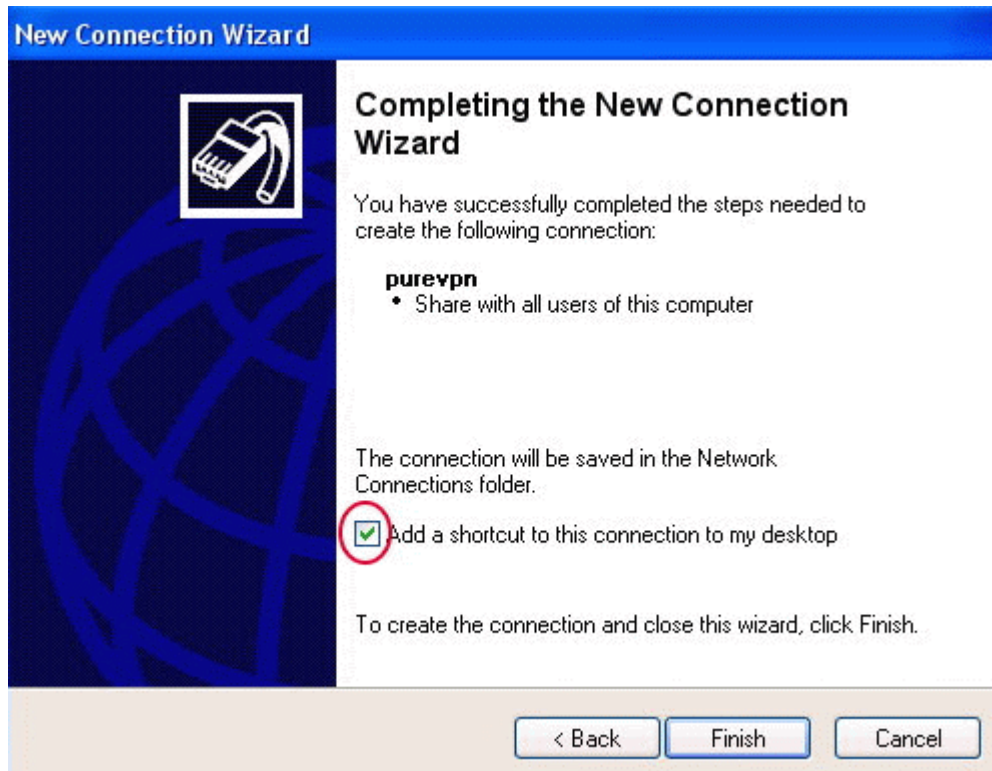
VPN Server Selection
What is the name or address of the VPN server?

Type the host name or Internet Protocol (IP) address of the computer to which you are connecting.
Host name or IP address (for example, microsoft.com or 157.54.0.1):

vpn.tvexpat.eu

< Back Next > Cancel

9. Click to select the Add a shortcut to this connection to my desktop check box if you want one, if not, then leave it unchecked and click finish

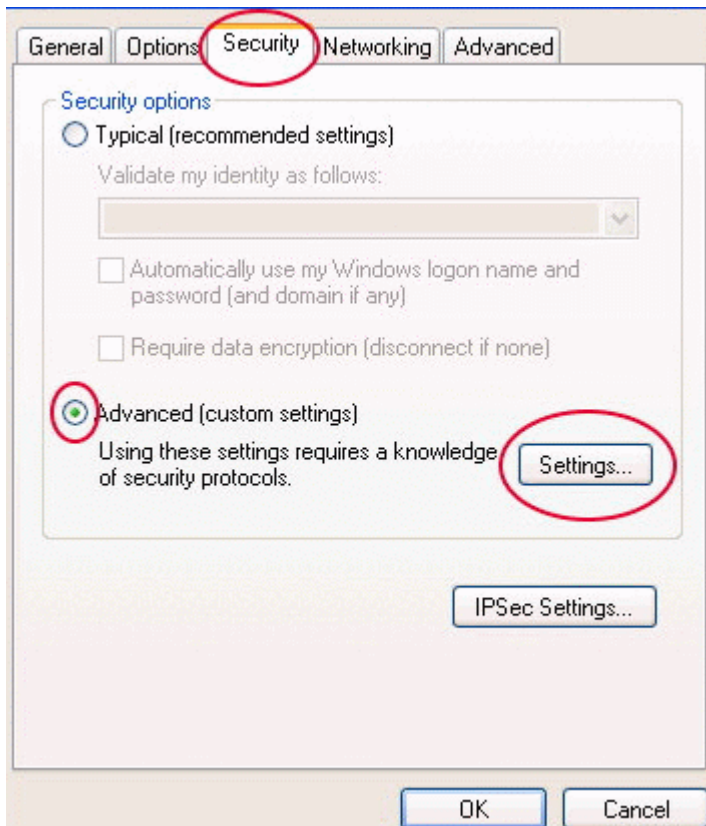


10. Set Username and Password

Next, we'll set up the connection settings. Double click on your desktop shortcut: In the 'User Name' box, enter your TVexpat username. In the 'Password' box, enter your TVexpat password. Optionally, click 'Save Password' to save your password as part of the connection.



11. Click the 'Security' tab, then click Settings.

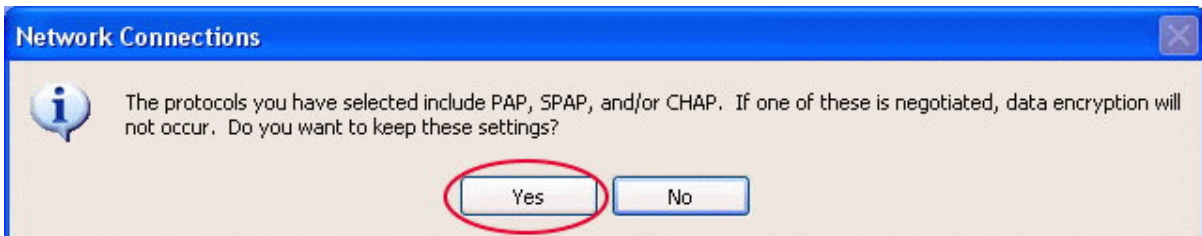


11-1. In this section make sure that the Data encryption is set to "Optional encryption"

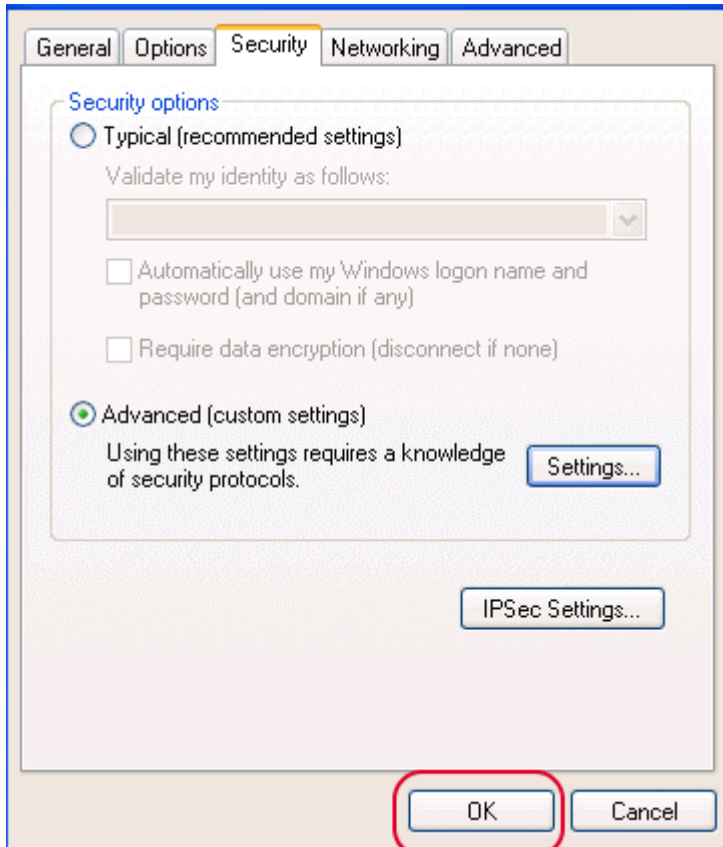
(Set the Check Box just like the following picture) then click Ok.



11-2. In pop up window Click on Yes.



11-3. Click the OK Button.



Now you are ready to use to use TVexpat.




Setting up an L2TP/IPsec connection (Optional)

By default, Windows sets the VPN connection type to PPTP. For better security, you should continue to set your connection up to be an L2TP/IPsec connection.

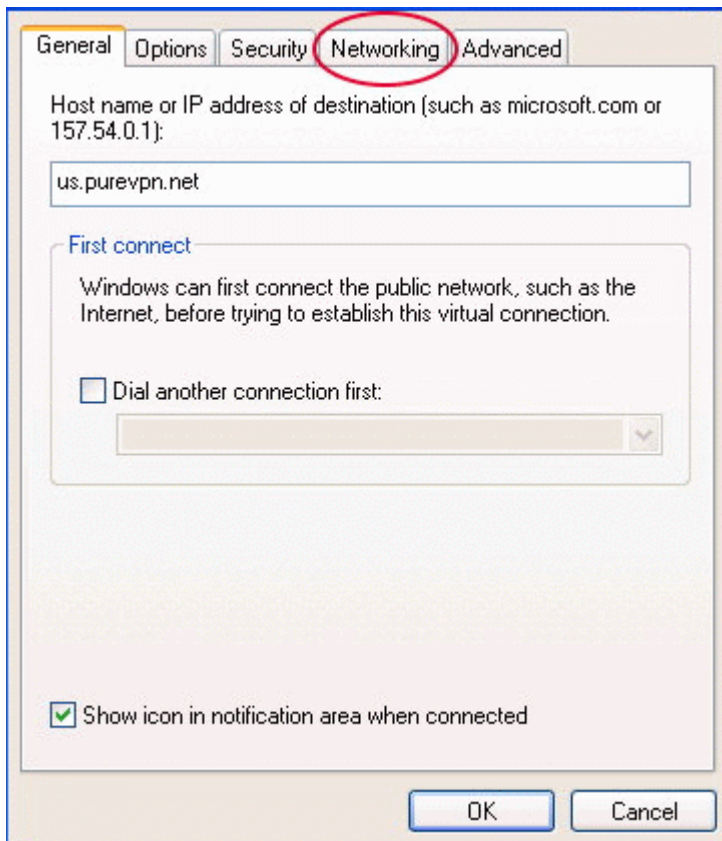
To do that, continue as follows.

Open the TVexpat connection and click 'Properties'



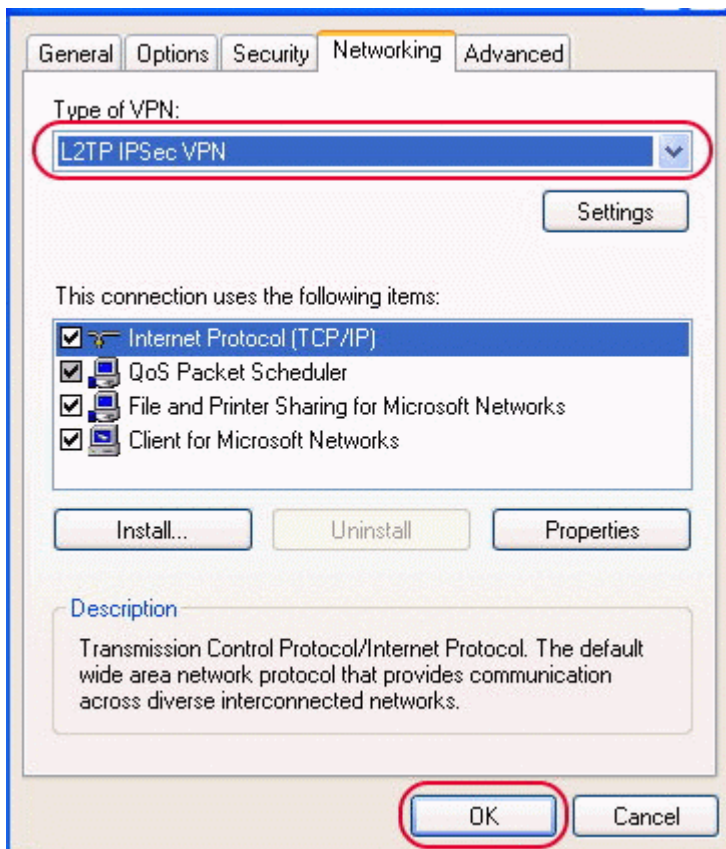
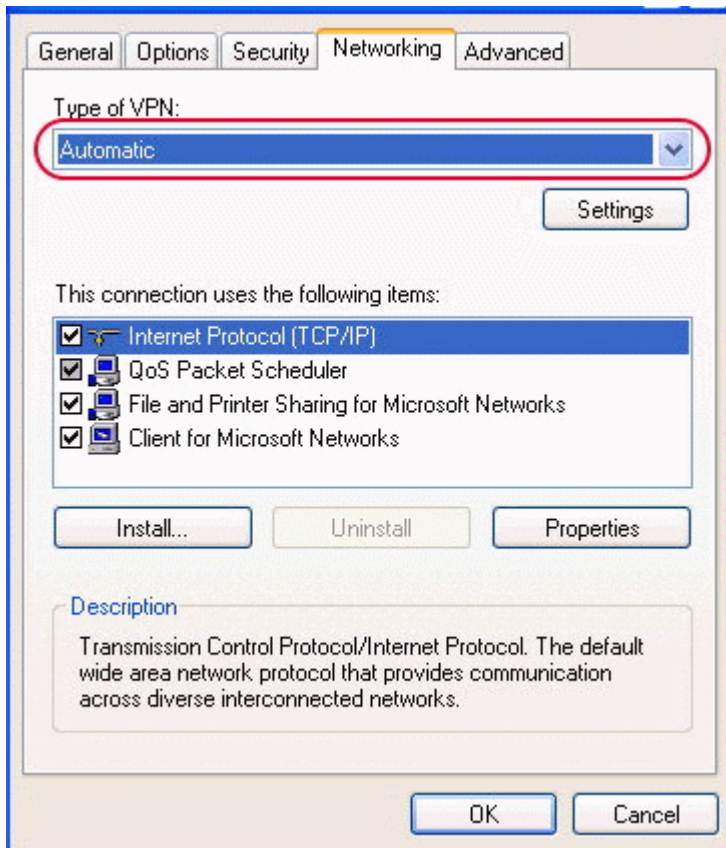
The screenshot shows a dialog box for configuring a VPN connection. At the top is an illustration of two laptops connected to a globe. Below this are input fields for 'User name:' (containing 'Enter your username here') and 'Password:' (containing '[To change the saved password, click here]'). A checked checkbox labeled 'Save this user name and password for the following users:' is followed by two radio button options: 'Me only' (selected) and 'Anyone who uses this computer'. At the bottom, there are four buttons: 'Connect', 'Cancel', 'Properties' (circled in red), and 'Help'.

12. Next click the 'Networking' tab.

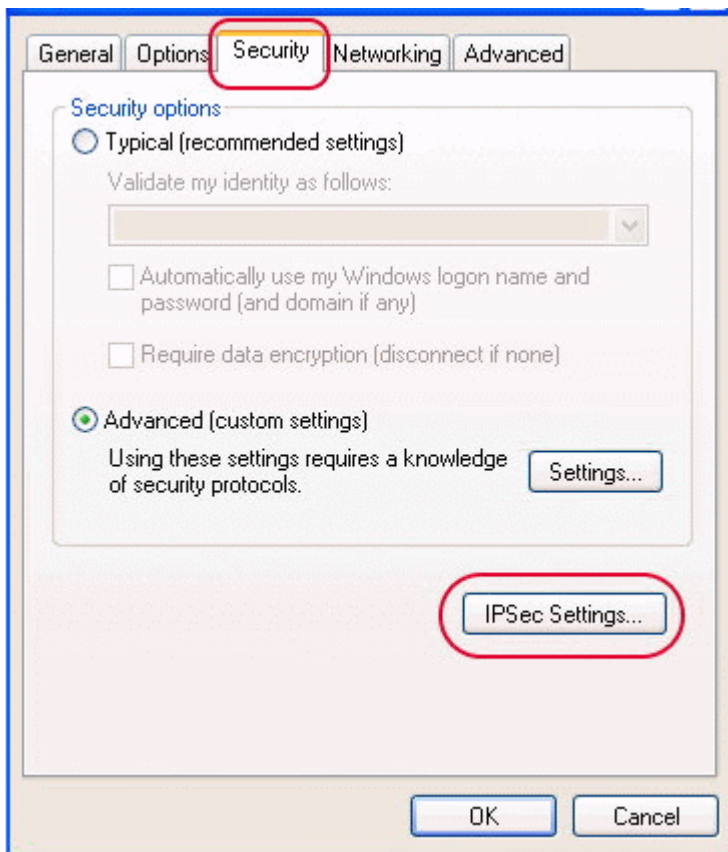


The screenshot shows the 'Networking' tab of the VPN connection properties dialog box. The tabs at the top are 'General', 'Options', 'Security', 'Networking' (circled in red), and 'Advanced'. The main area contains a text box for 'Host name or IP address of destination (such as microsoft.com or 157.54.0.1):' with the value 'us.purevpn.net'. Below this is a section titled 'First connect' with the text: 'Windows can first connect the public network, such as the Internet, before trying to establish this virtual connection.' There is an unchecked checkbox 'Dial another connection first:' followed by a dropdown menu. At the bottom, there is a checked checkbox 'Show icon in notification area when connected' and two buttons: 'OK' and 'Cancel'.

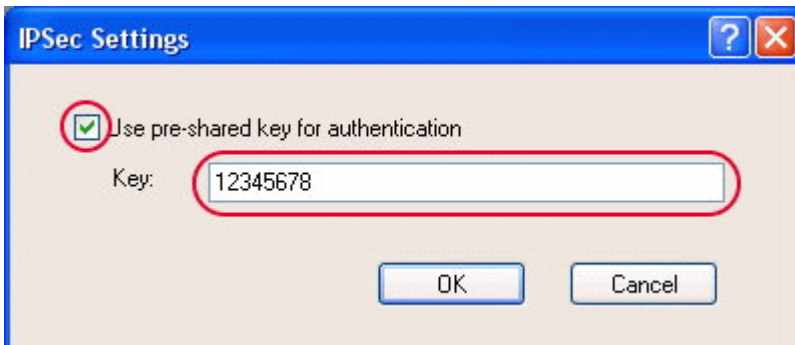
13. Next click the popup menu and change the 'Type of VPN' from 'Automatic' to 'L2TP IPsec VPN' and click 'OK'.



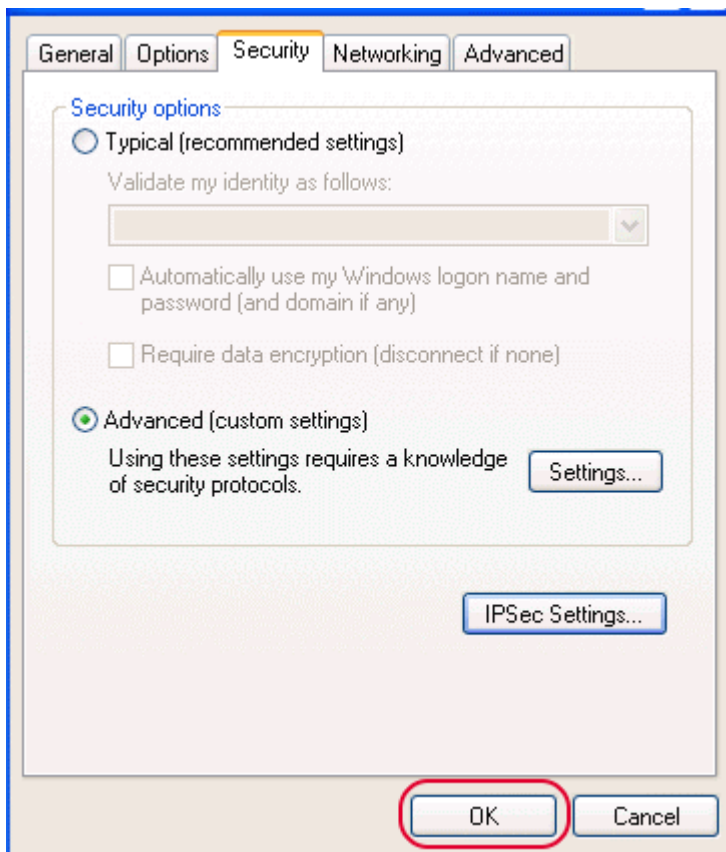
14. Click the 'Security' tab, then click the 'IPsec Settings...' button.



15. In the next window, click the checkbox and type '12345678' as the key and click 'OK'.



16. Click Ok. That's it.



After this, the connection will use L2TP/IPsec instead of PPTP.
Note that if the connection fails, try changing the connection back to PPTP or Automatic.