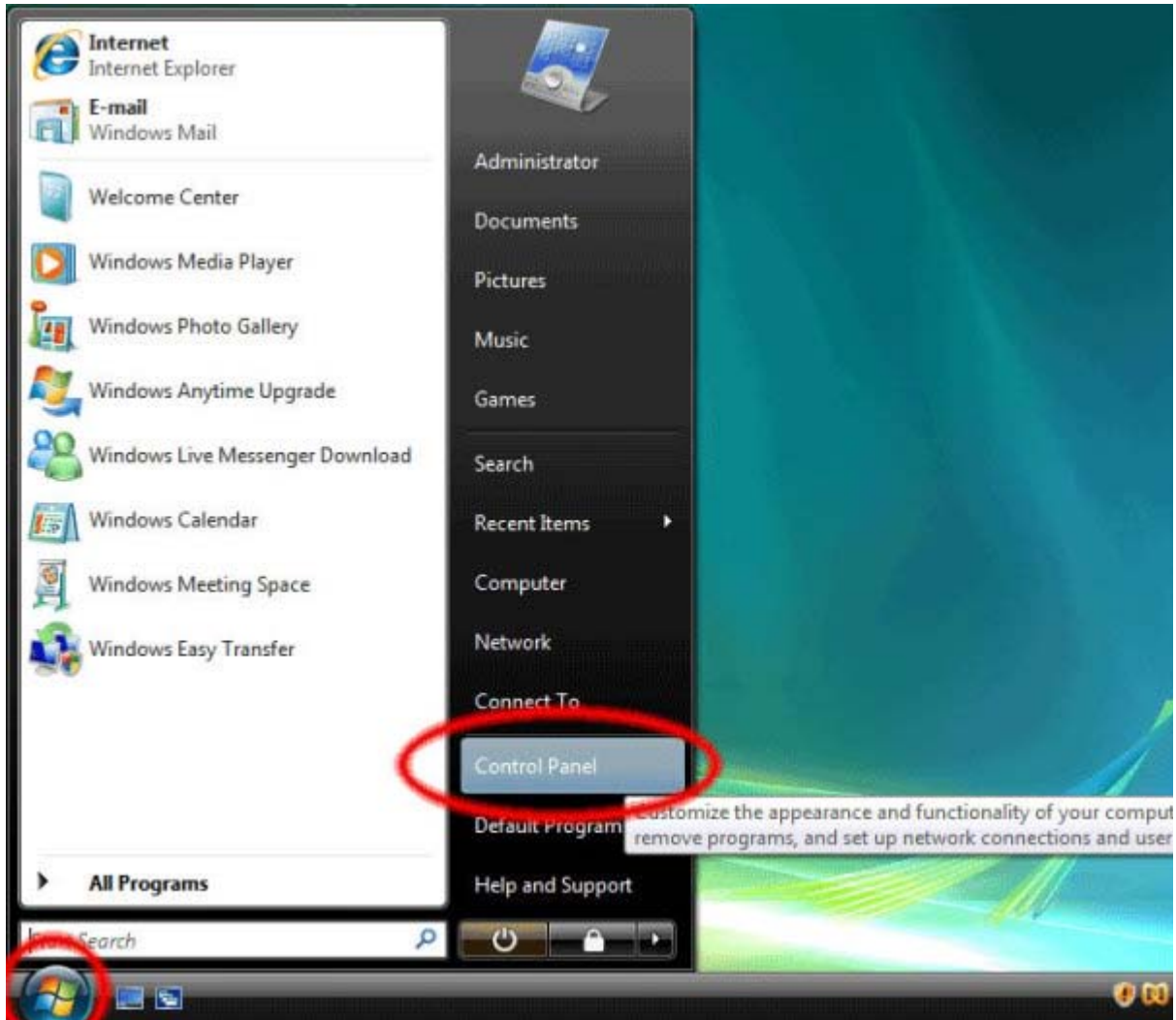


# Setting up your connection with Windows Vista

Setting up **TVexpat** access under Windows Vista is simple. The following instructions go step-by-step through the creation process. These instructions work under all the client-side variations of Windows Vista, namely Home Basic, Home Premium, Business, and Ultimate.

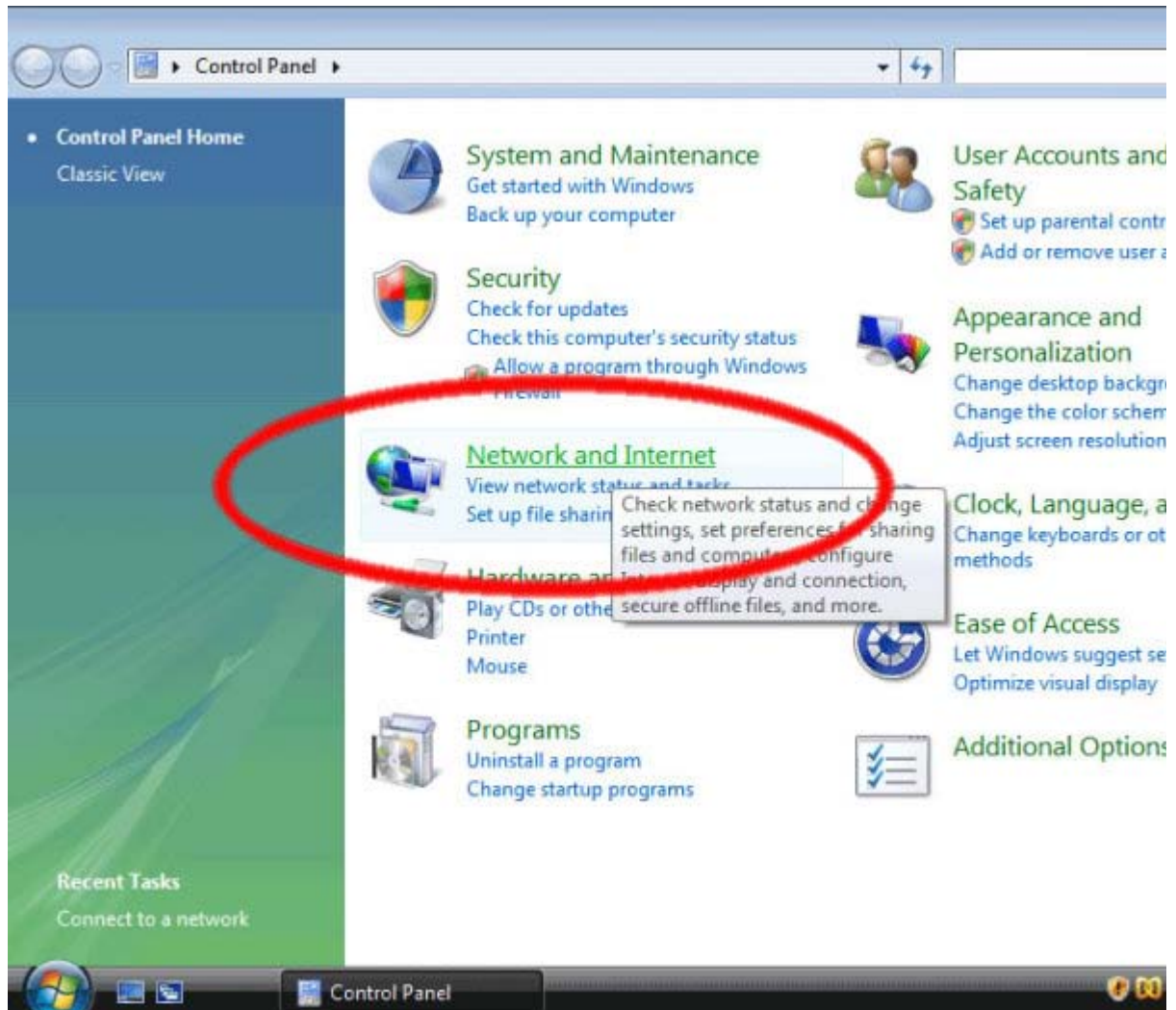
## 1. Open the Control Panels

First, click on the Start button and click "Control Panels". This opens up the "Control Panel Home."



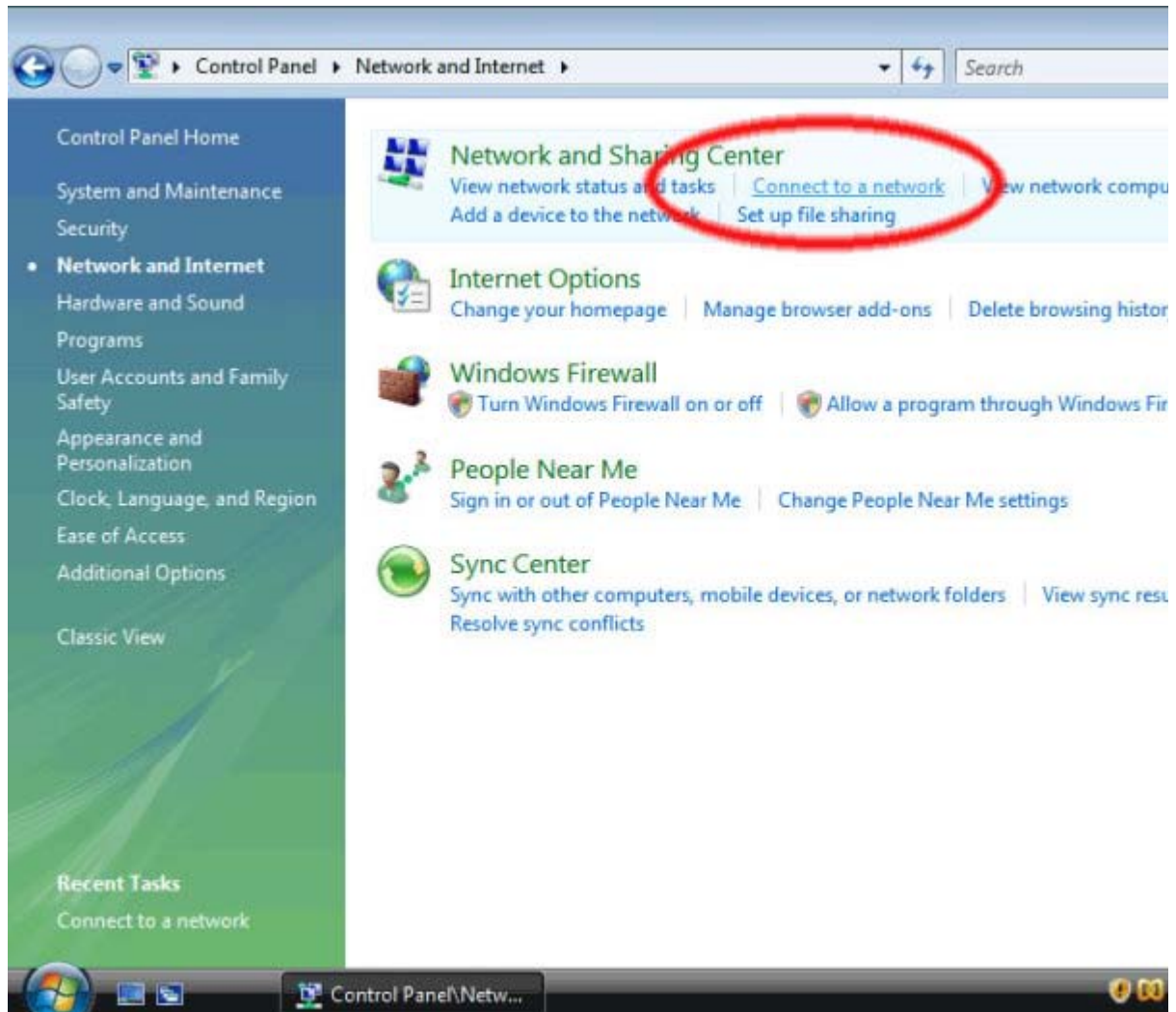
## 2.Go to the “Network and Internet” panel

Next, click on the “Network and Internet” control panel, which is circled in red below.



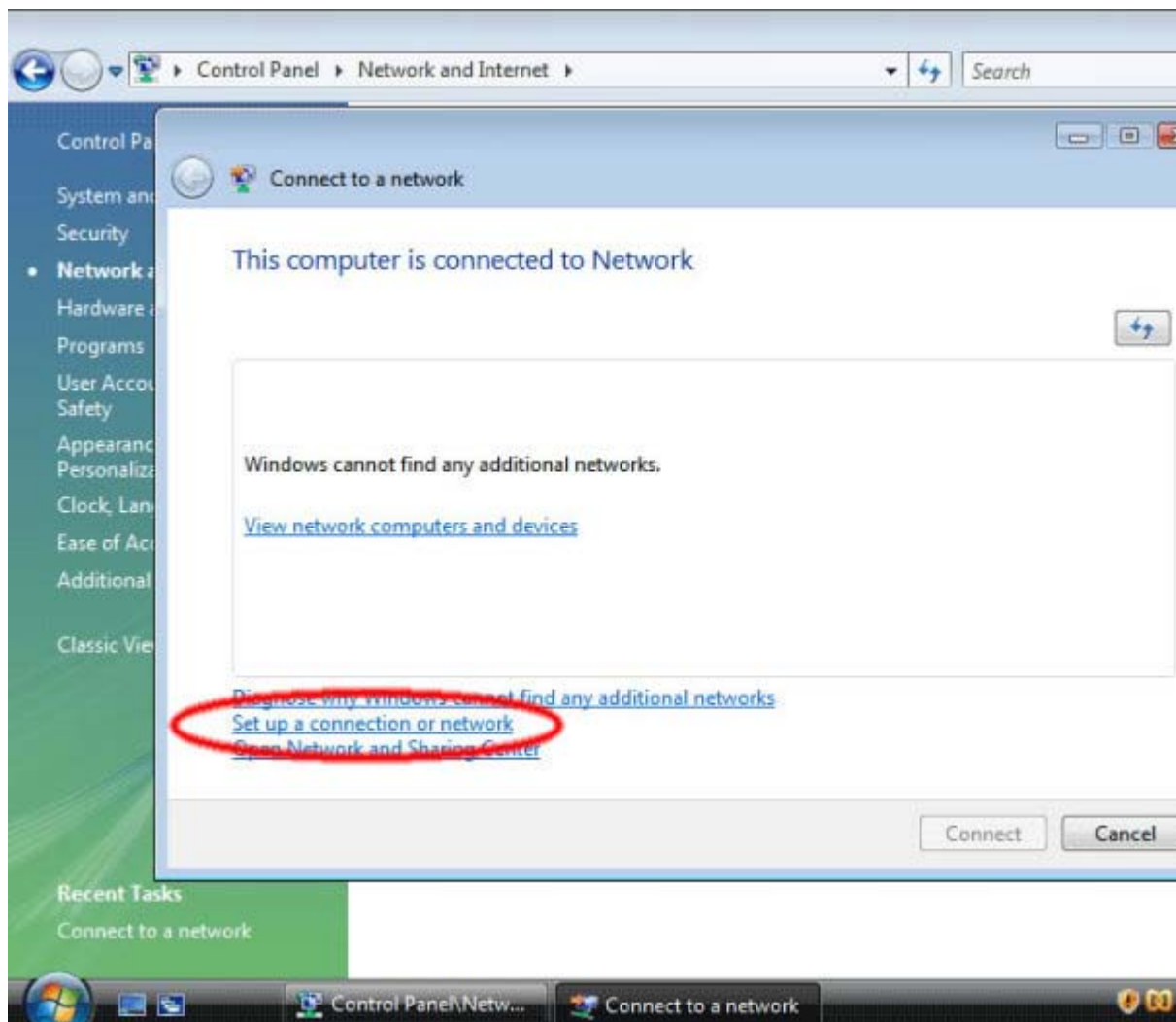
### 3.Connect To A Network

Next, click on “Connect to a network.”



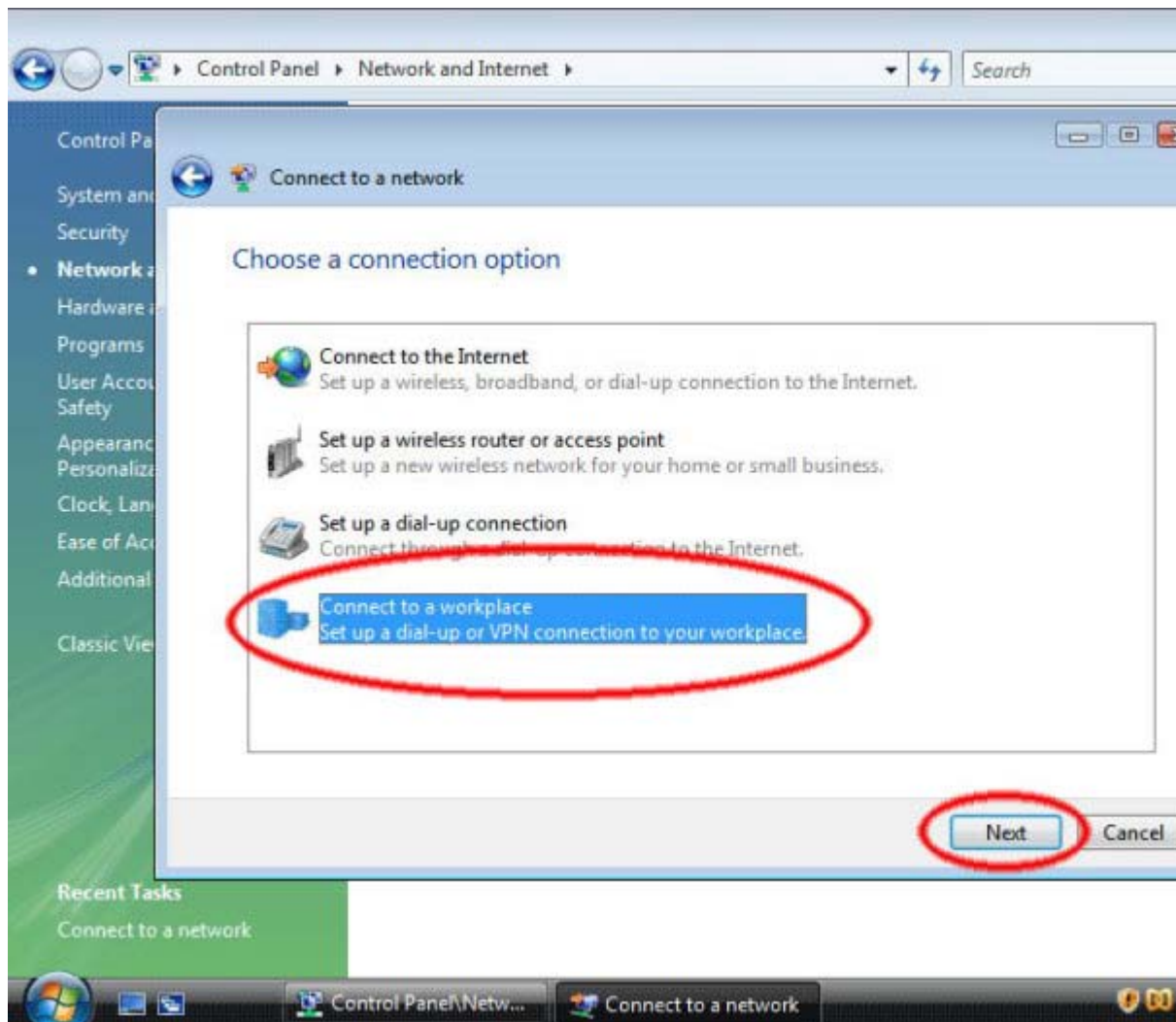
## 4. Set up the VPN connection

The next screen may not look quite like this if you have networks already defined. In any case, click on “Set up a connection or network.”



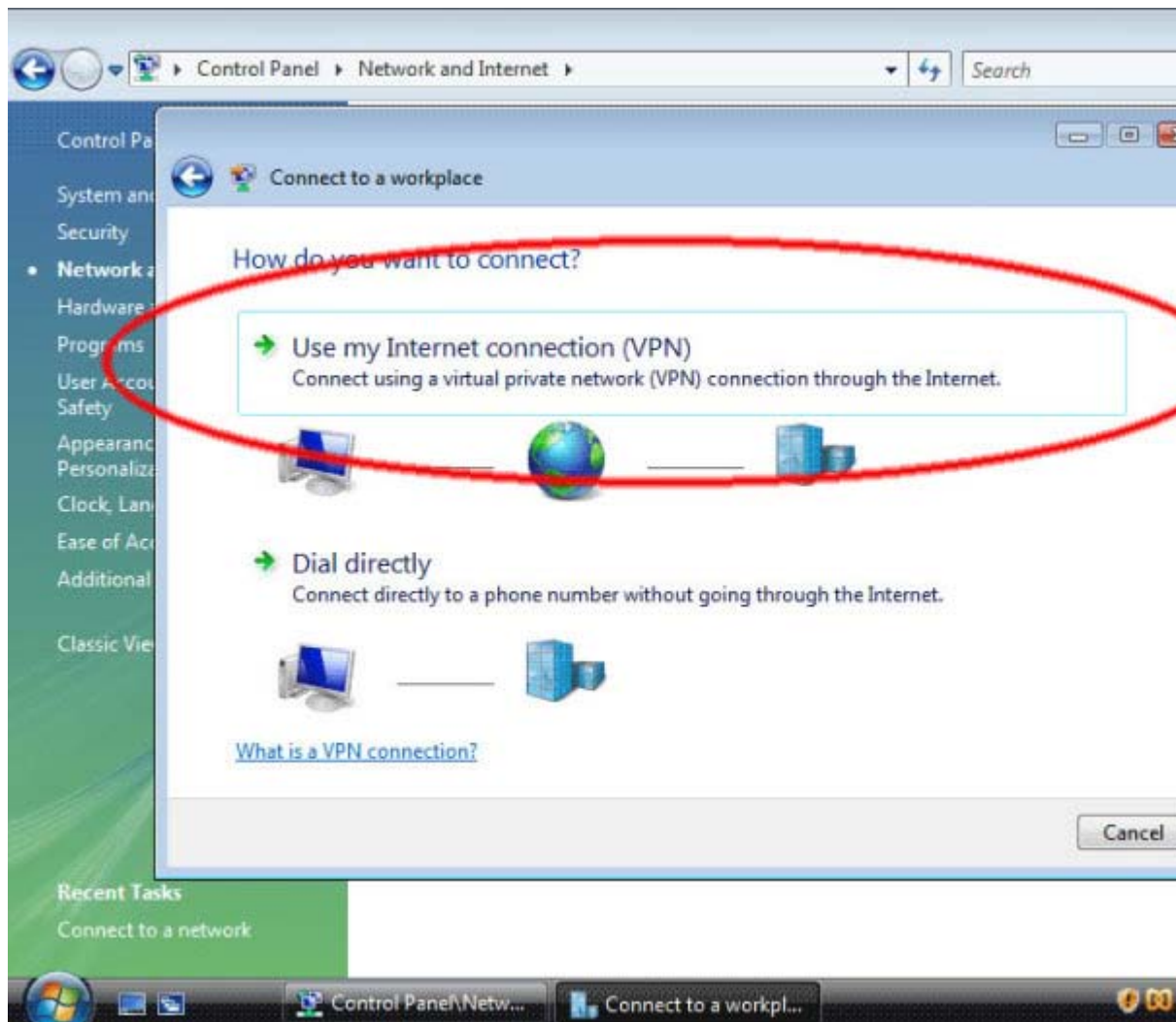
## 5. Choose the Connection Type

On the next screen, click on "Connect to a workplace" then click "Next."



## 6. Select the Internet connection

Next click "Use my Internet connection (VPN)."



## 7. Enter the server information

Now, enter the server information.  
vpn.tvexpat.eu`

Connect to a workplace

Type the Internet address to connect to

Your network administrator can give you this address.

Internet address:

Destination name:

Use a smart card

Allow other people to use this connection  
This option allows anyone with access to this computer to use this connection.

Don't connect now; just set it up so I can connect later

Next Cancel

In the text box labelled 'Internet address' type " vpn.tvexpat.eu "

In the text box labelled 'Destination name' type 'TVexpat'. This is the name of the connection and will show up in the "Connect to a network" screen when we're done.

Lastly, make sure that the checkbox labelled "Don't connect now; just set it up so I can connect later" is checked.

Then click the "Next" button.

## 8. Enter your TVexpat username and password

In this screen, enter your TVexpat username and password.

Connect to a workplace

Type your user name and password

User name: TVexpat123456

Password: ●●●●●●●●●●

Show characters

Remember this password

Domain (optional):

Create Cancel

In the text box labeled "User name:" (highlighted in blue), enter your TVexpat username.

In the text box labeled "Password:" (highlighted in yellow), enter your TVexpat password.

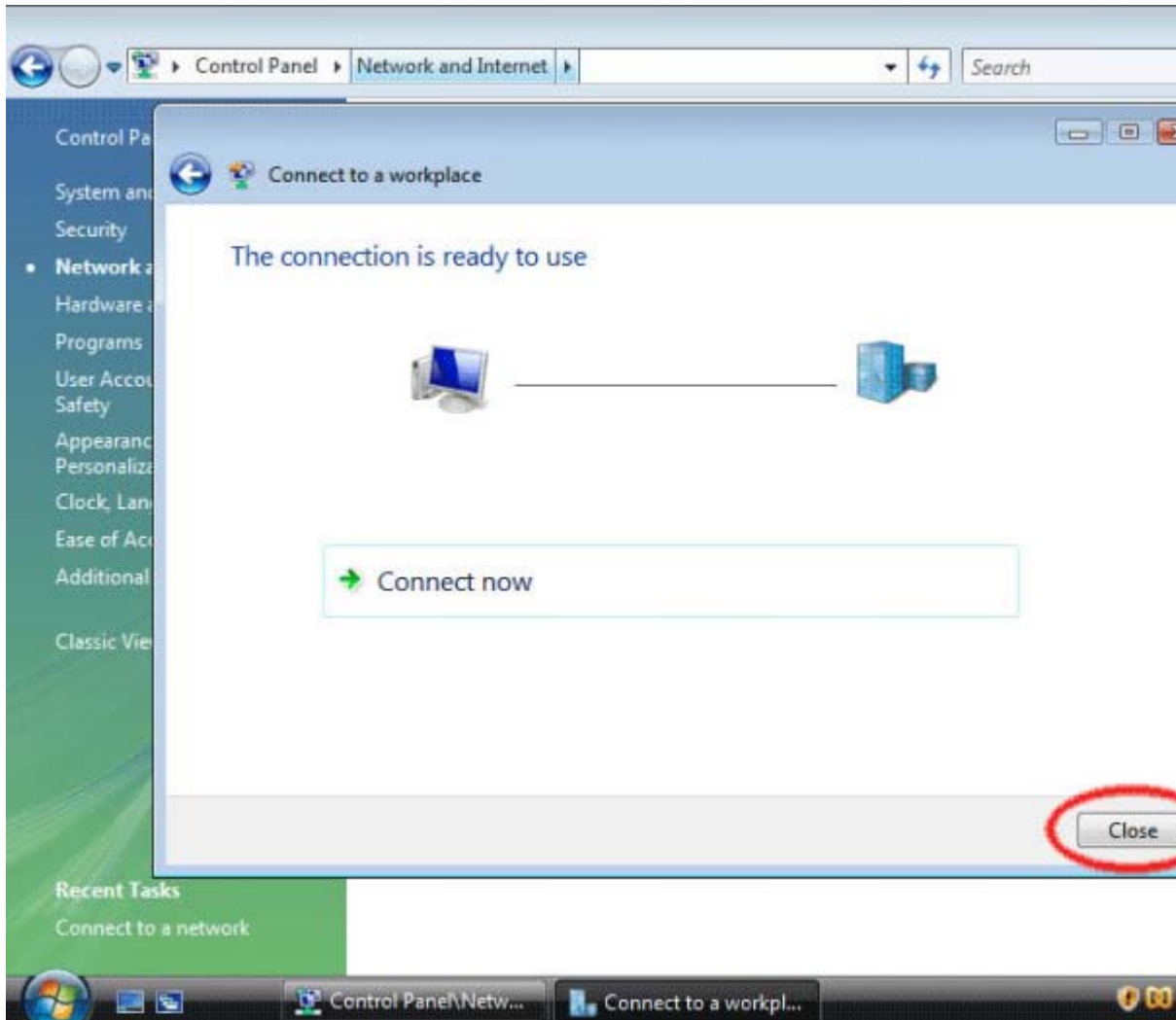
Optionally, check the "Remember this password" checkbox (highlighted in green) and you won't have to enter your password when you connect to TVexpat.

Then, click the "Create" button.



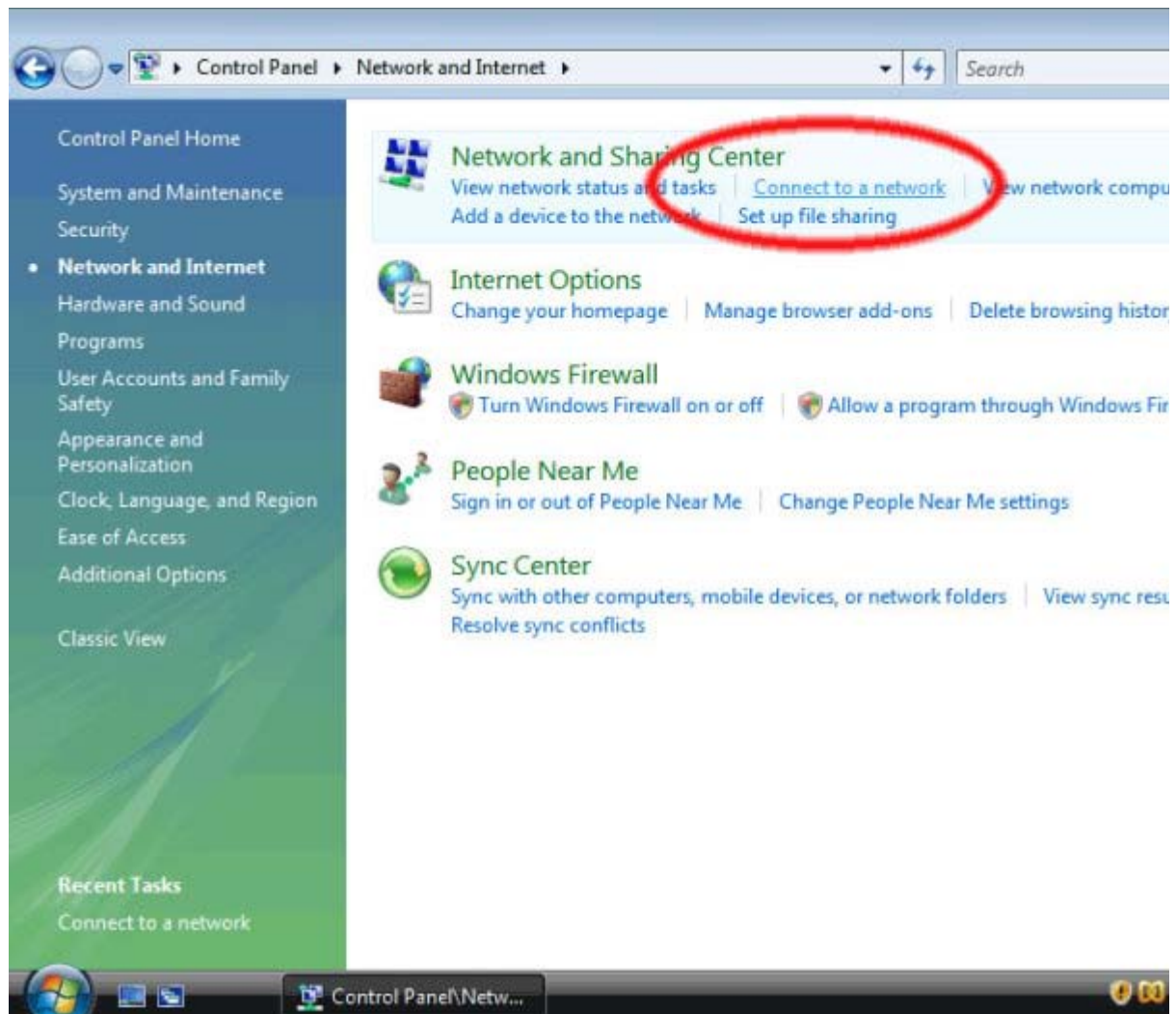
## 9.Connection Ready

You should see this screen next. Click the “Close” button to return to the “Network and Internet” screen.



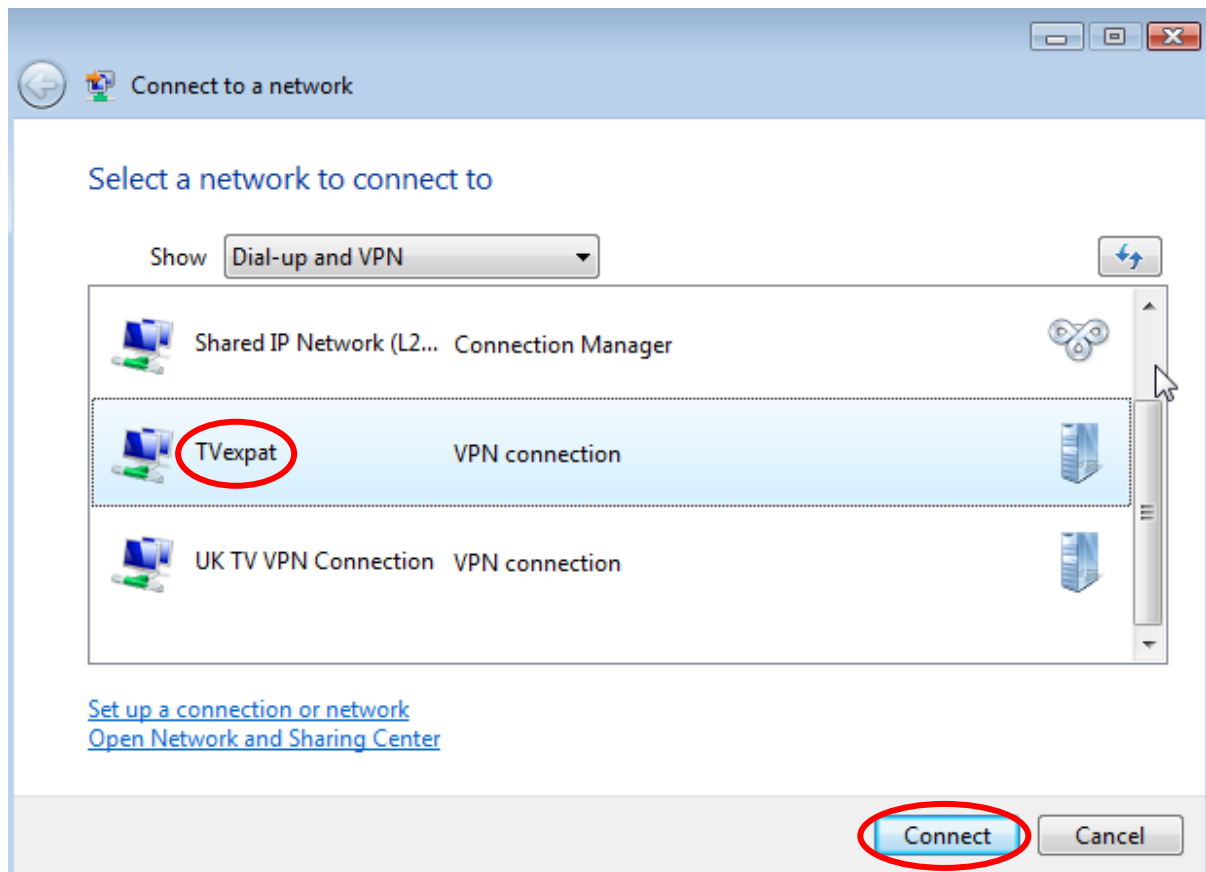
## 10.Go to the connection

Now click on "Connect to a network" again.



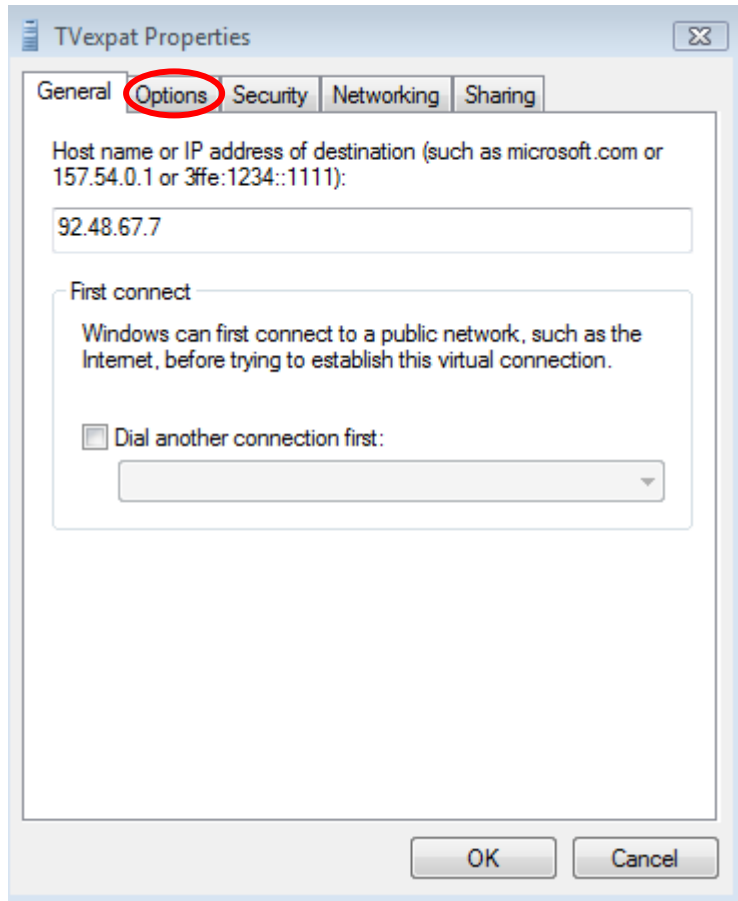
## 11. Select the connection properties

In the "Connect to a network" screen, you should see the TVexpat connection that we set just up. Right-click on the TVexpat connection document (circled in red), and choose "Properties" (circled in green) from the menu.



## 12. Select Options

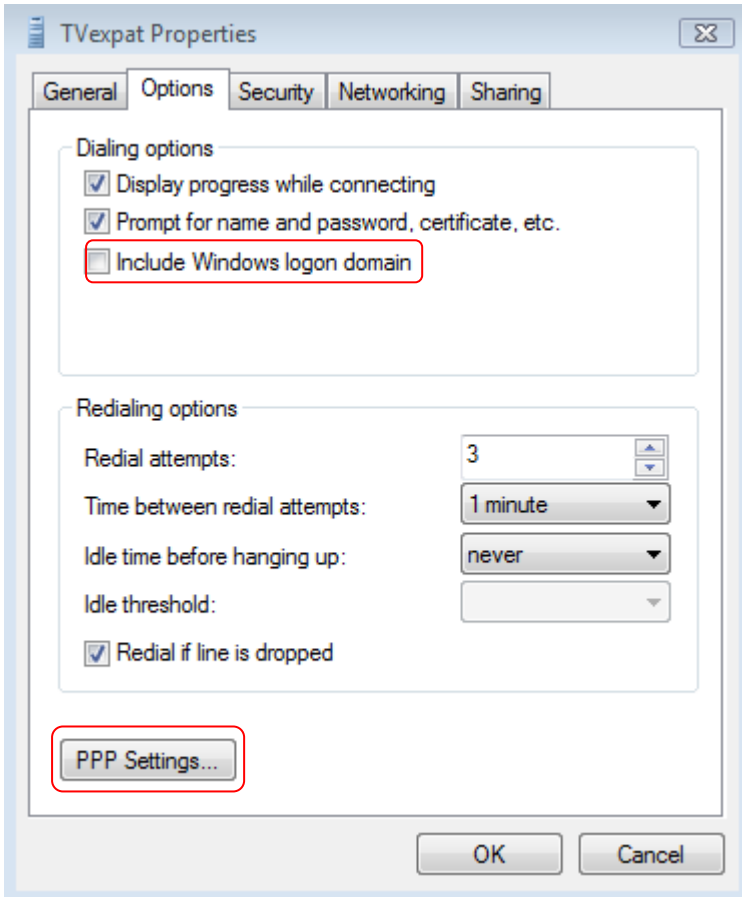
In the property window, click the "Options" tab.



## 13. Deselect domain logon

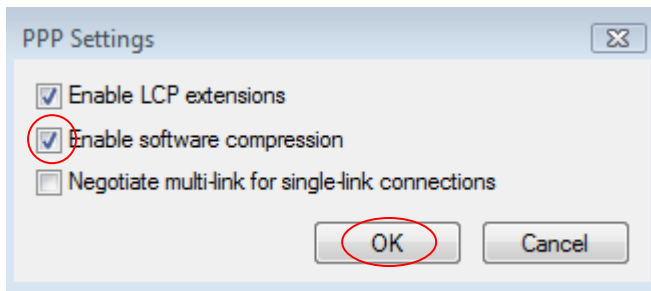
In the "Options" tab, make sure the checkbox labelled "Include Windows logon domain" (highlighted in green) is unchecked.

Then click the "PPP Settings..." button (highlighted in red).



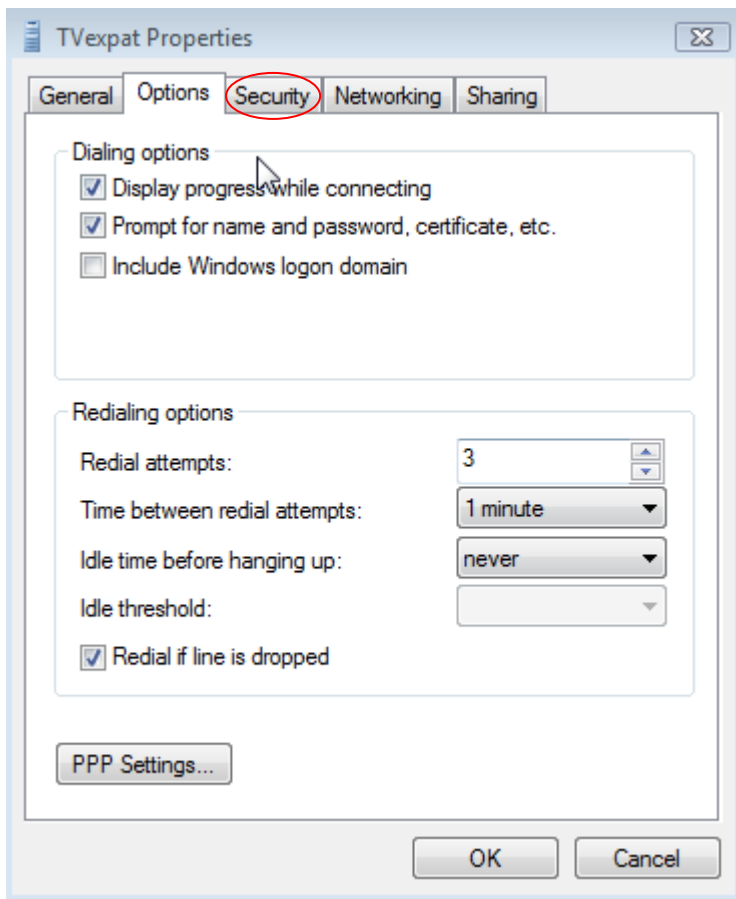
## 14.PPP options

In the “PPP Settings” dialog box, make sure the settings look like the ones in the picture below, then click the “OK” button (highlighted in red).



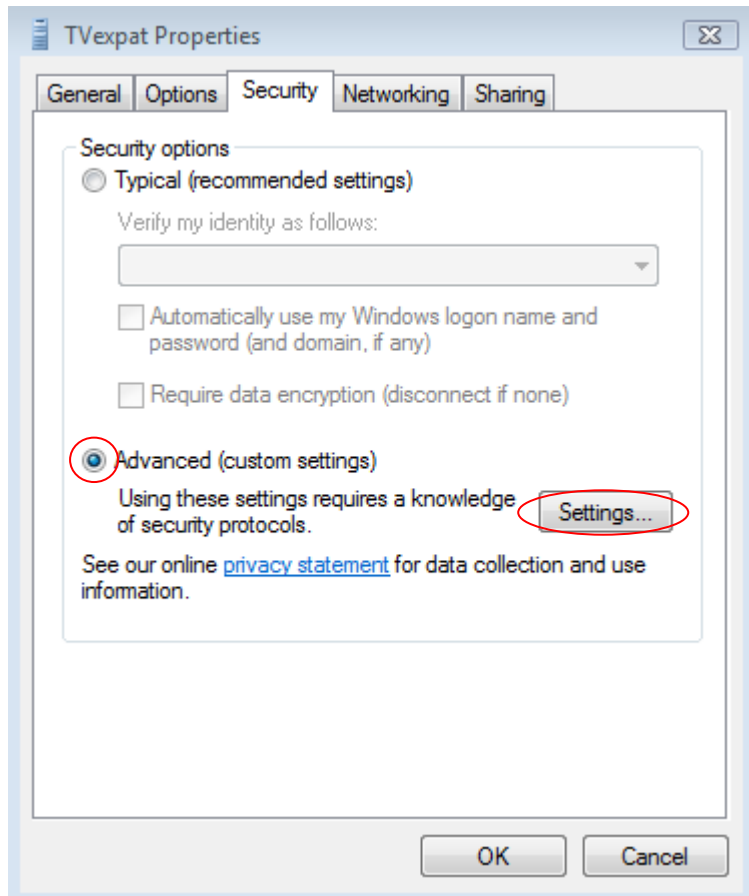
## 15.Go to the Security tab

Next, click the “Security” tab, which is highlighted in red.

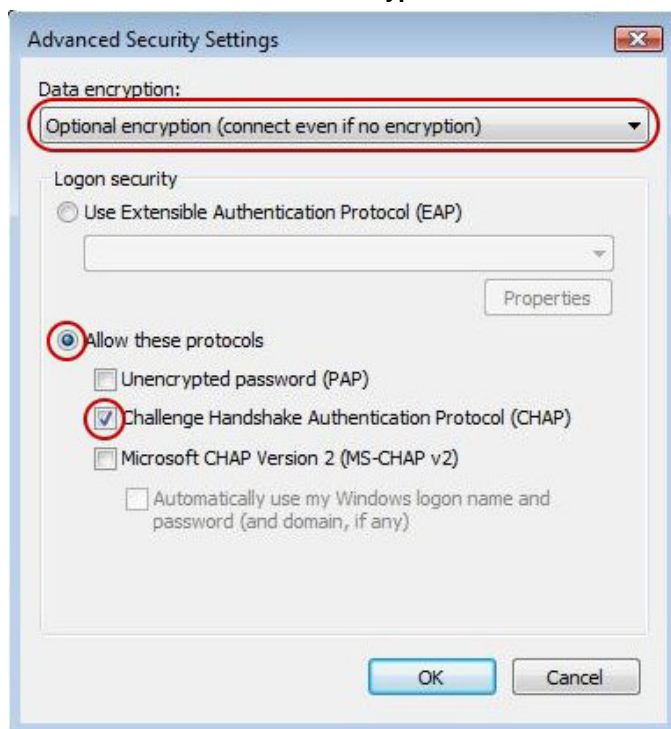


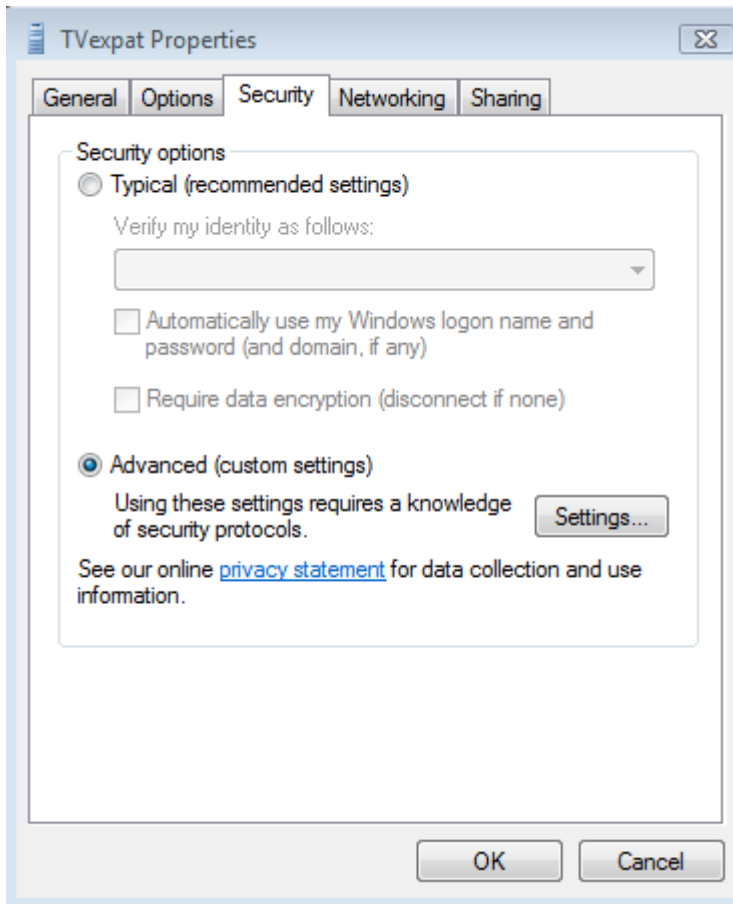
## 16.Security tab settings

Make sure the security tab has the same settings as here. Then click on "Setting" button.

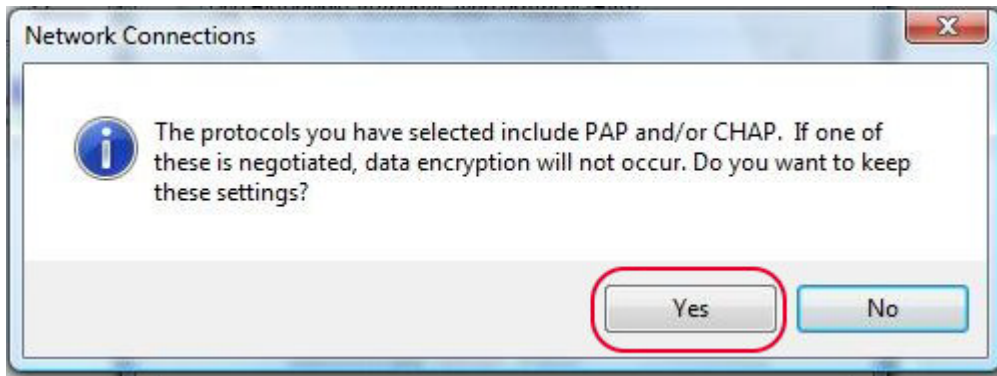


16-1.Make sure that the Data encryption section is set to "Optional encryption".



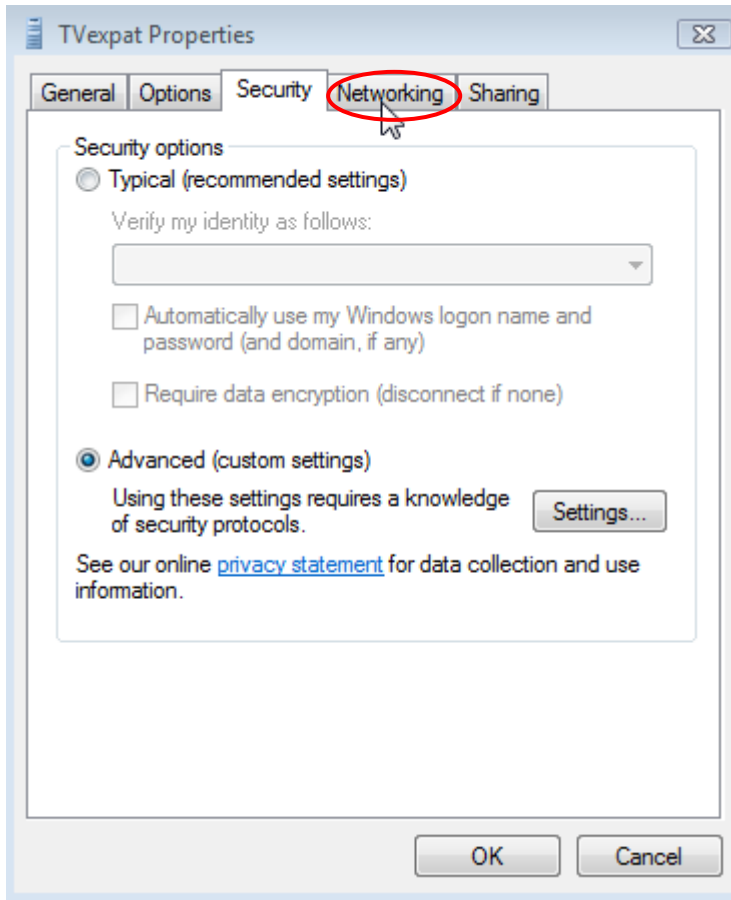


16-2. At the Pop Up window Click on "Yes"





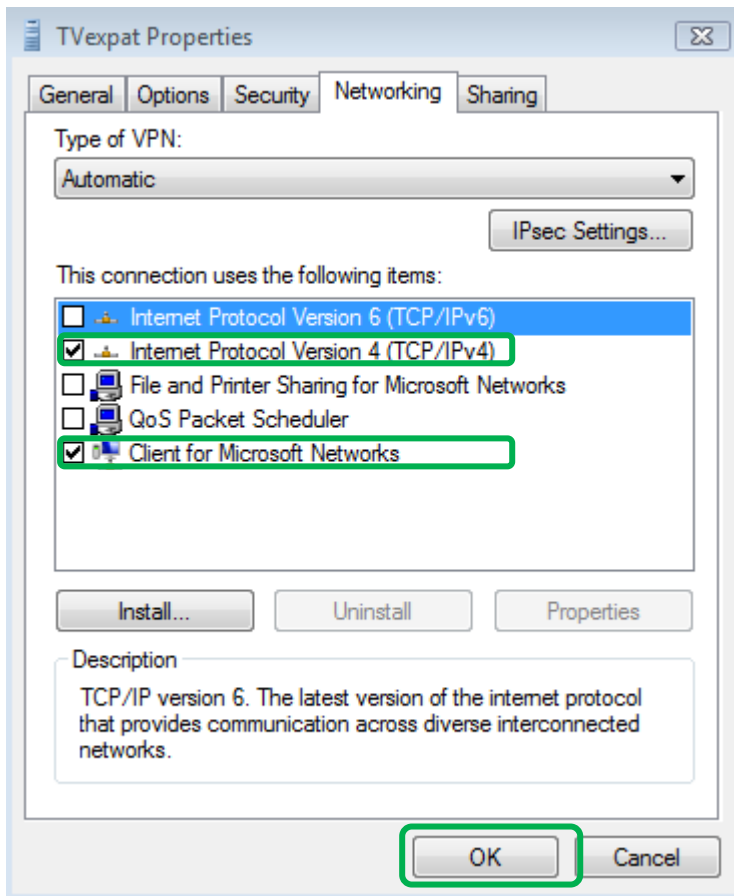
16-3. Go to the "Networking" tab, highlighted in red below.



## 17. Networking settings

This screen shows you the network settings. You may have different items in your list. In the list of items that you see, make sure that only the “Internet Protocol Version 4(TCP/IPv4)” and “Client for Microsoft Networks” items are checked.

If other protocols are checked, uncheck them by clicking on the checkbox (the thing that looks like a ‘v’). TVexpat currently does not route anything except TCP/IP version 4.



## 18.Done with basic setup!

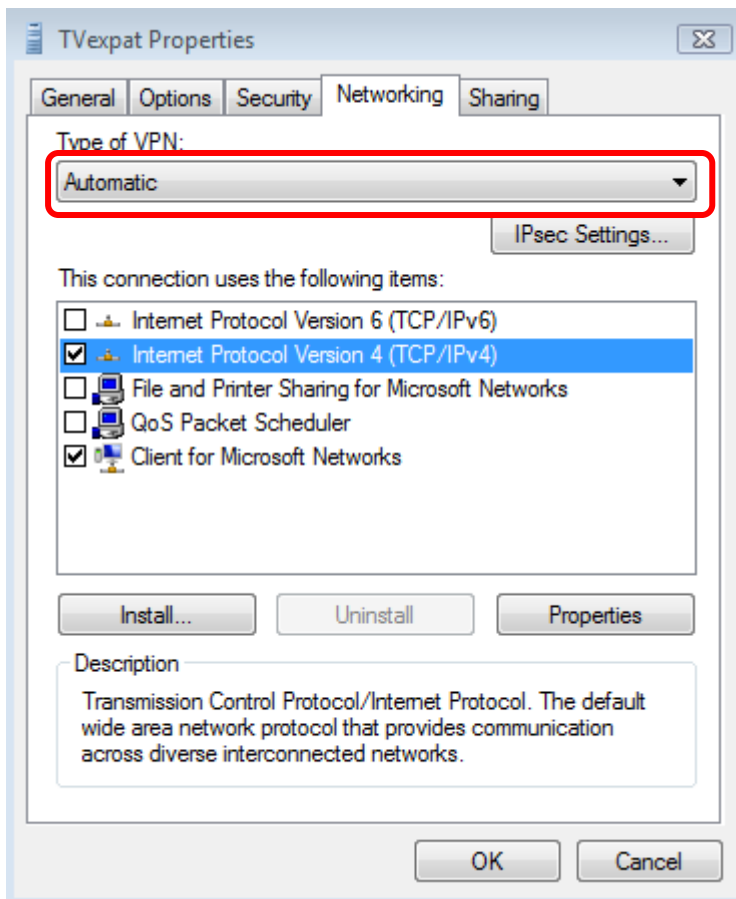
You're now done with your basic setup! You've set up your TVexpat connection to use PPTP. Click "OK" to finish now, if you want.

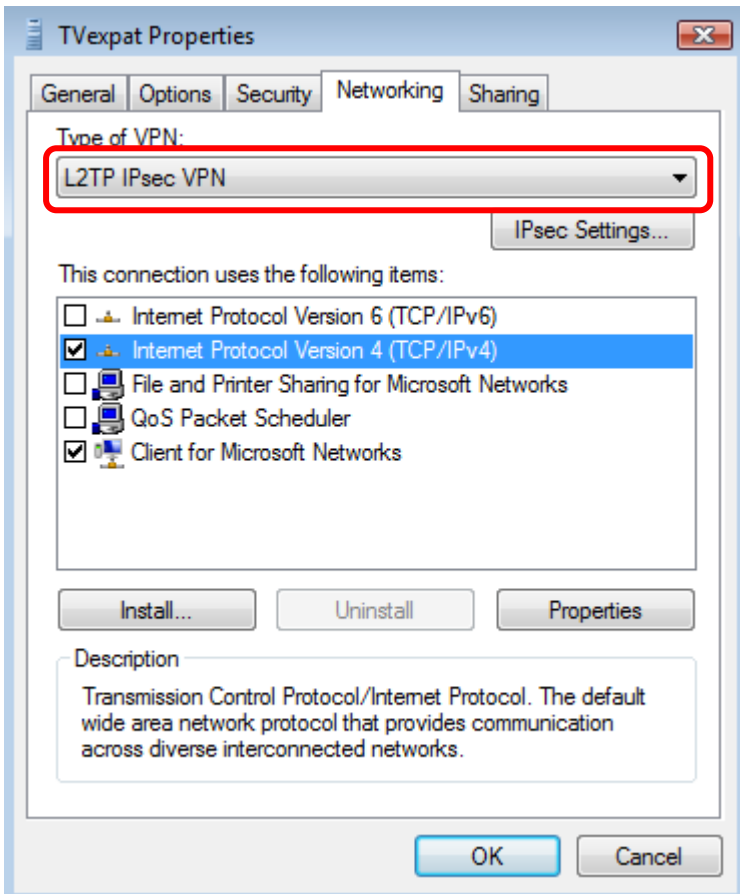
However, for better security we recommend that you configure your VPN connection to use an L2TP/IPsec connection, which is more secure.

To do this, keep reading.

## Setting up L2TP/IPsec

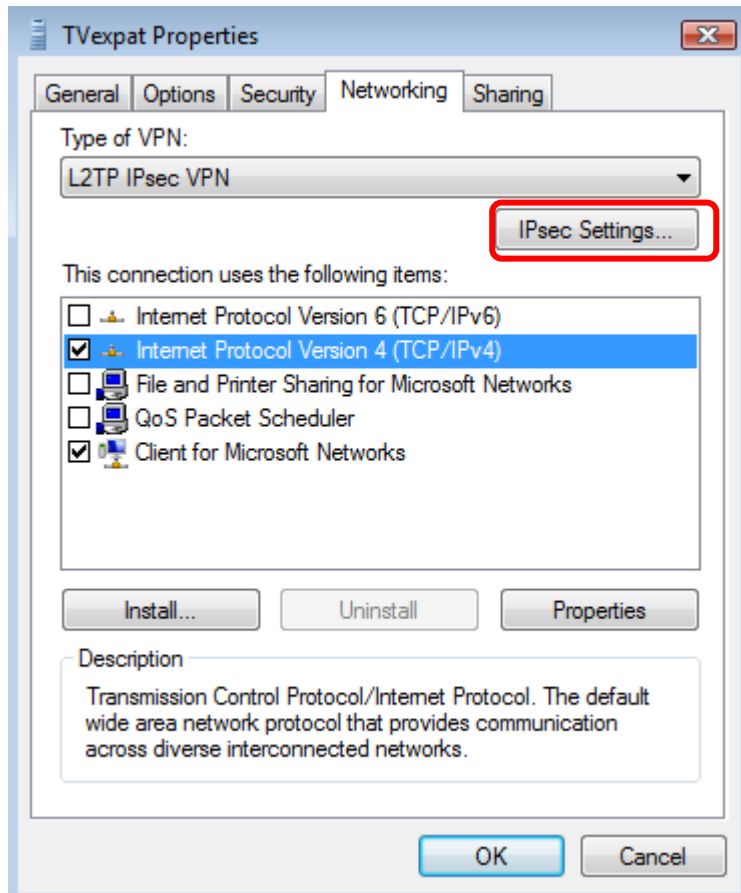
In the "TVexpat Properties", click on the "Type of VPN" pop-up menu (highlighted in red) and select "L2TP/IPsec".





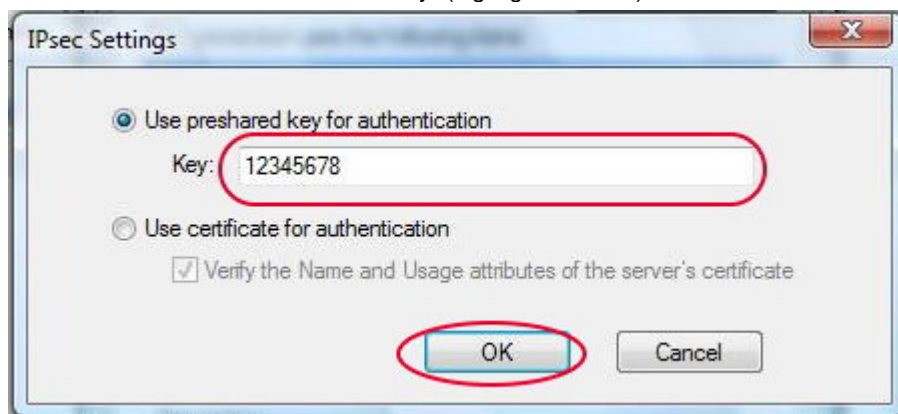
## 19.Go to IPsec Settings...

Next, click on the “IPsec Settings...” button (highlighted in blue).



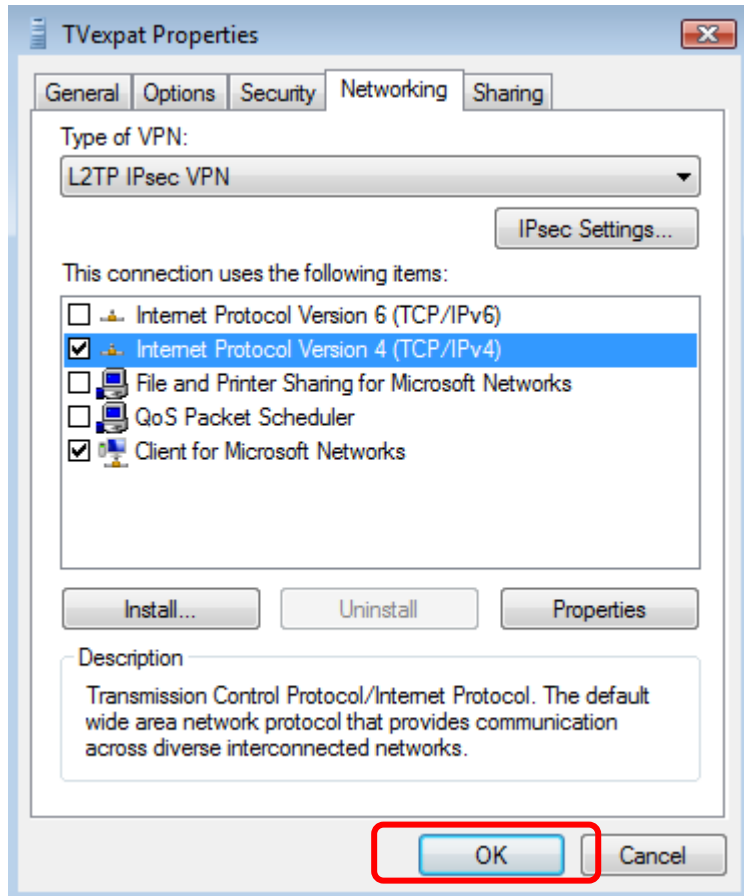
## 20.Set the Preshared Key

In the “IPsec Settings” dialog, click the radio button labeled “Use preshared key for authentication”. Then type ‘12345678’ into the textbox labeled “Key” (highlighted in red). Then click the “OK” button (highlighted in red).



## 21.Finished!

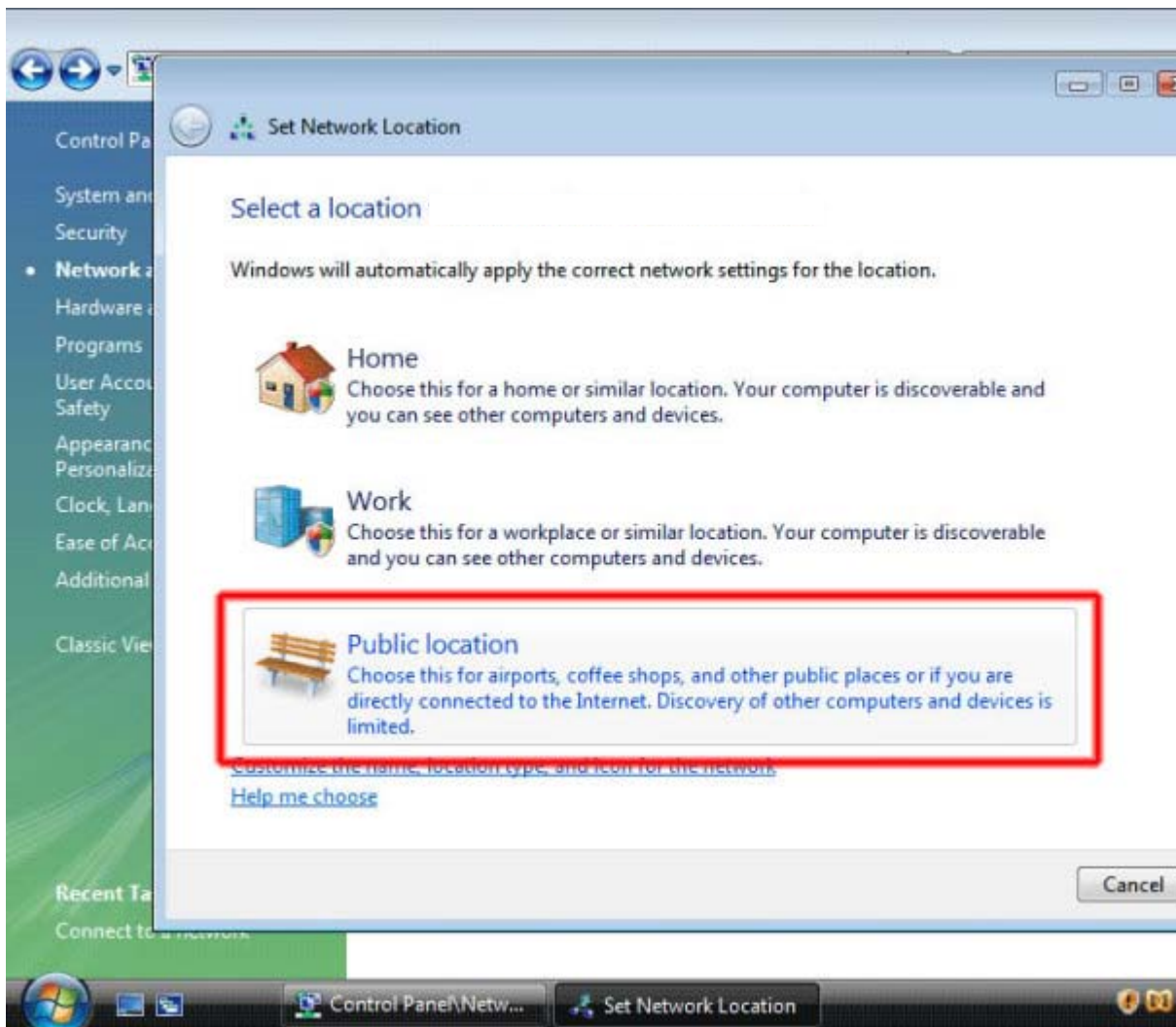
You're finished! Click the "OK" button to save your settings.



## 22.Set the connection location

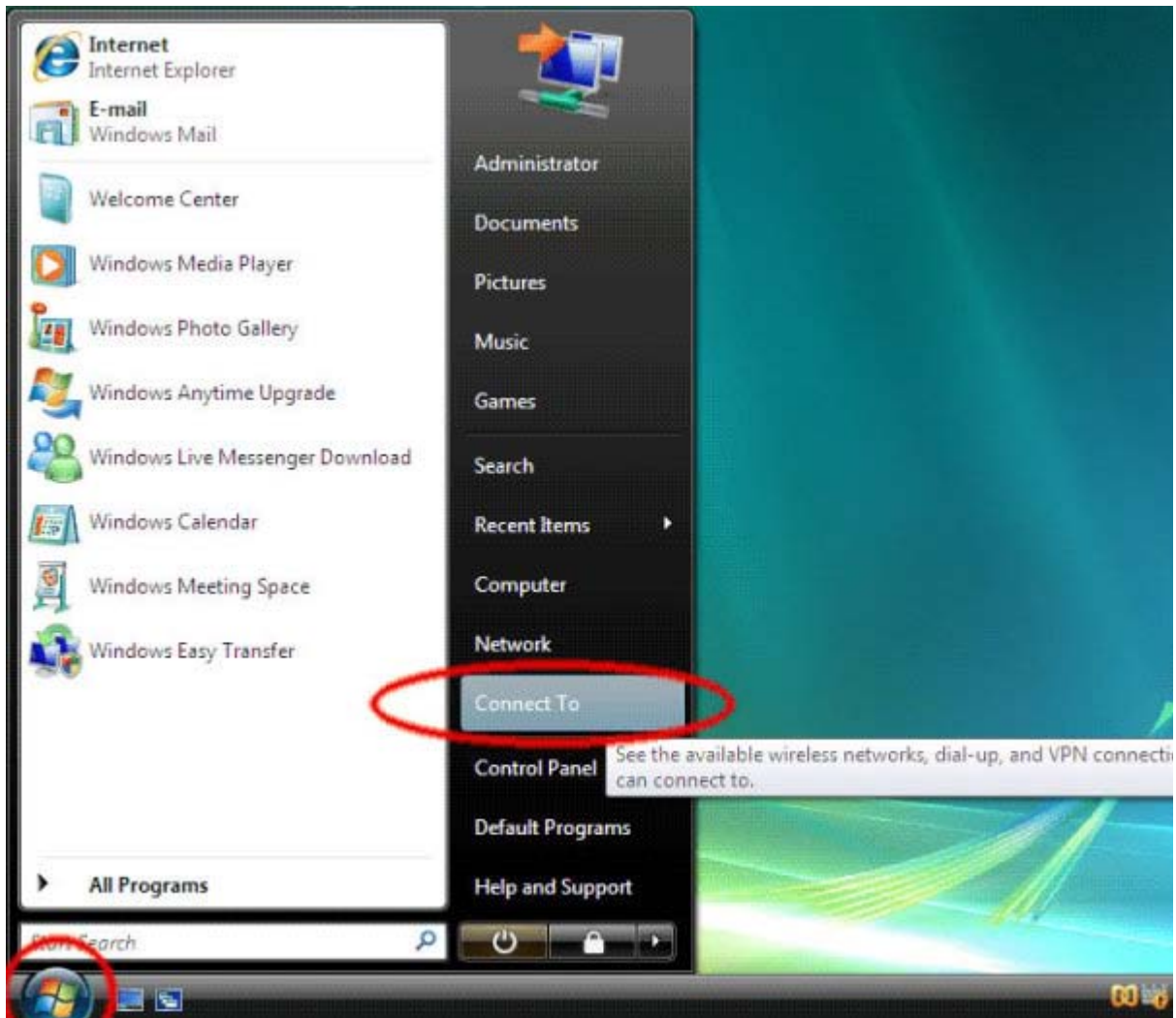
The first time you connect to TVexpat, you might see Windows asking you if you want to automatically connect to TVexpat whenever you're at a given location. If you want to connect to TVexpat automatically when you're at a public hotspot, click "Public location."

However, you probably should click "Cancel", because most public locations require you to click through an agreement before you can access the Internet — meaning that any connection you attempt will fail. Instead, you should just connect manually.



## 23.Connecting to TVexpat

To connect to TVexpat, go to the Start button and click "Connect To".





23-1. Then click on the TVexpat entry and click "Connect".

